



**VOLUME & LASH-LINER**

# LASH QUEEN MYSTIC BLACKS WP M A S C A R A

- THE 1<sup>ST</sup>  
LASH-LINER  
VOLUME  
MASCARA
- CHARGES  
AT THE ROOTS  
EVEN BETWEEN  
LASHES
- DEFINES THE  
LENGTHS TO  
REVEAL  
CONTRAST

LASH QUEEN  
MYSTIC BLACKS WP  
M A S C A R A

**MAKE-UP RESULT**



VOLUME  
+  
LASH-LINER

## A UNIQUE BRUSH/ FORMULA DUO

### PRECISE “DOUBLE BRUSH RITUAL”

- 1 Half corolla bristles:**  
Strong deposit at the roots in one stroke
- 2 Comb side:**  
Smaller thin bristles to separate the tip of lashes
- 3 Tip:**  
Accentuate the deposit at the corner = Create a coma

### “EBONY BLACK” WP FORMULA

- 1 Ebony Black pigments + Polymers = Deep intense black**
- 2 Soft waxes = Better deposit**
- 3 Multi-polymers system + Volatile oil = WP properties**

## PRECISE “DOUBLE BRUSH RITUAL”

=

LASH-LINER VOLUME EFFECT



① Half corolla bristles = Strong deposit of charge at the roots

② Comb side = Separate tip of lashes

③ Tip = Create a coma

WP EBONY BLACK FORMULA



① Ebony Black pigments + Polymers = Deep intense black

② Soft waxes = Better deposit at the roots

③ Multi-polymers system + Volatile oil = WP properties

## APPLICATION

- Use the larger semi-rounded shape side to coat and charge roots + the upper inner rim.
- Brush from the root to the tip.
- Turn the brush to use the comb to separate tips and create a Lash-liner effect at the roots by contrast.
- Intensify the outer corner with the tip of the brush.

## APPLICATION

- 1 Coat & charge the root of the lashes



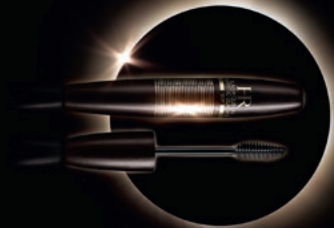
- 2 Separate and brush the top of lashes



- 3 Intensify the outer corner



**UNPRECEDENTED  
JEWEL-DESIGN**







# LASH QUEEN MYSTIC BLACKS WP M A S C A R A

## MAKE-UP RESULT

- Volume + Lash-liner

## MYSTIC WP TECHNOLOGY

- Ebony Black  
Pigments +  
Intensifying  
Polymers = Deep  
intense black
- Soft Waxes =  
Better deposit of  
charge at the roots
- Multi-polymers  
system + Volatile Oil  
= WP properties

## JEWEL DESIGN